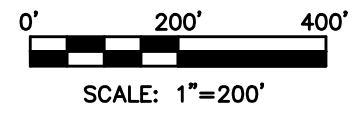
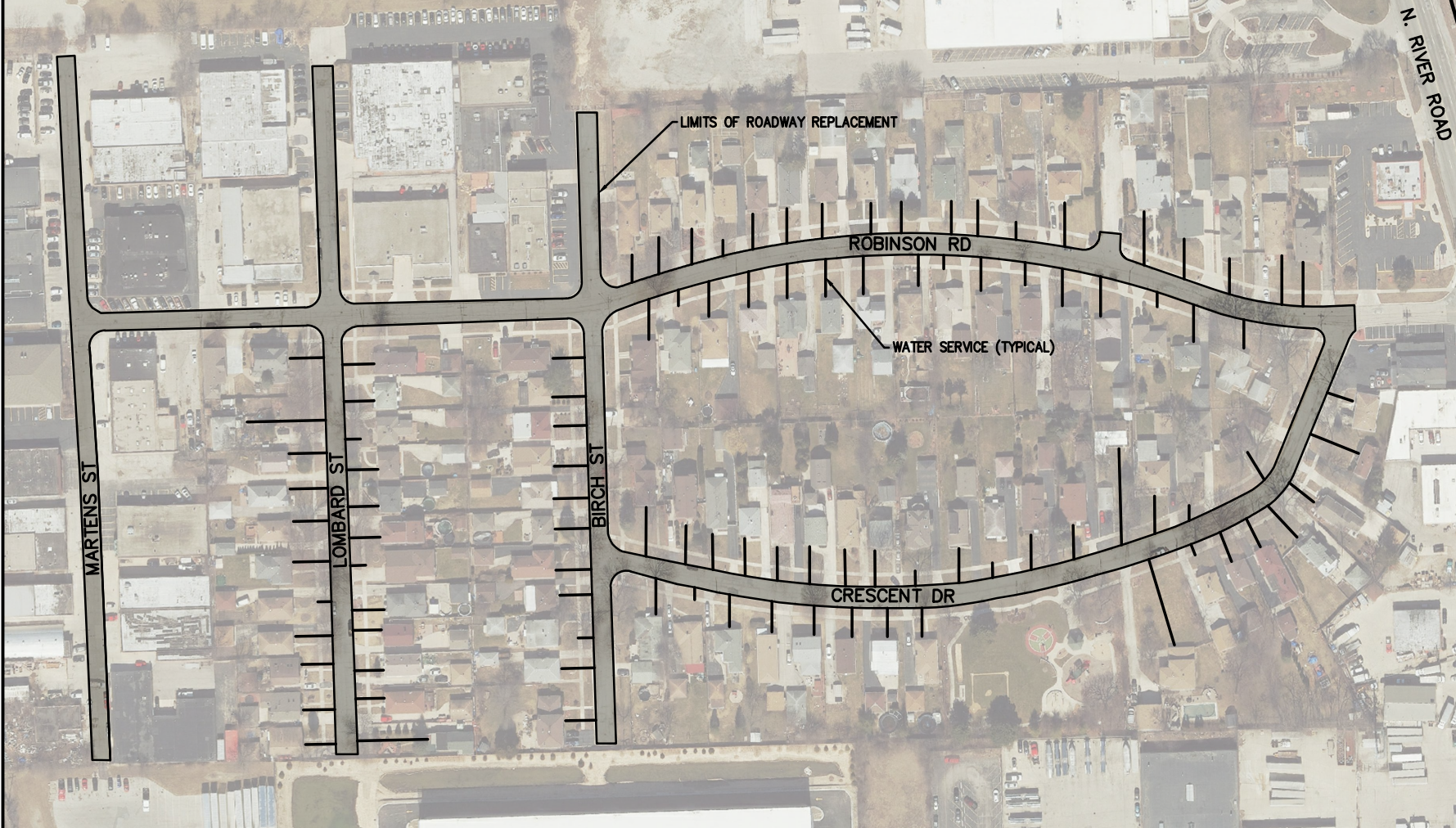
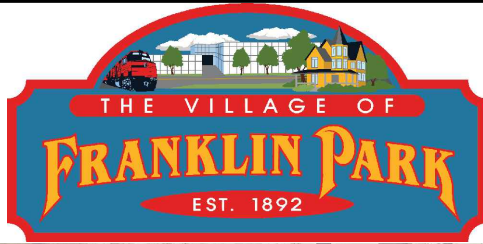


S:\Civil\VOFP\_Misc\Garnt Application\_Robinson Road Area\Location Exhibit.dwg - ROBINSON 8.5x11  
 PLOTTED: 3-19-24 @ 10:40am  
 VERSION: 24.2s (LMS Tech)



REV.	DESCRIPTION	DATE
-	ORIGINAL PLAN DATE	3/19/24
	REVISIONS	

**SMITH LASALLE**  
 CONSULTING ENGINEERS  
 10102 Pacific Avenue • Franklin Park, Illinois 60131  
 Phone: 847-260-5095 Fax: 877-774-8895  
 www.smithlasalle.com

**ROBINSON AREA IMPROVEMENTS**  
 VILLAGE OF FRANKLIN PARK  
 WATERMAIN AND ROADWAY RECONSTRUCTION

SCALE: 1" = 200'	
SHEET 1 OF 1	
DWG. NO. R1	REV. NO. -