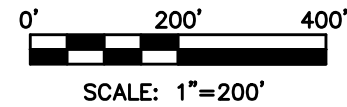


S:\Civil\VOFP Grand George Signal\Grant Application\Location Exhibit.dwg - BELMONT & EDG 8.5x11
 PLOTTED: 3-19-24 @ 3:07pm
 VERSION: 24.2s (LMS Tech)



SMITH LASALLE
 CONSULTING ENGINEERS
 10102 Pacific Avenue • Franklin Park, Illinois 60131
 Phone: 847-260-5095 Fax: 877-774-8895
 www.smithlasalle.com

REV.	DESCRIPTION	DATE
-	ORIGINAL PLAN DATE	3/15/24
REVISIONS		

BELMONT AVE & EDGINGTON ST
 VILLAGE OF FRANKLIN PARK
 TRAFFIC SIGNAL IMPROVEMENTS

SCALE: 1" = 200'	
SHEET 1 OF 1	
DWG. NO. BE1	REV. NO. -