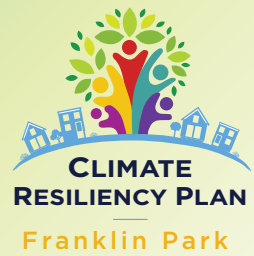


Village of Franklin Park Climate Resiliency Plan



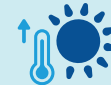
What is Climate Resilience?

Resilience refers to the ability to prepare for threats and hazards, adapt to changing conditions and withstand and recover rapidly from adverse disruptions. Climate resilience refers specifically to the ability to prepare for, adapt to and recover from climate-related hazards and conditions. Hazards like thunderstorms, heat waves and other extreme weather events are influenced by climate and can cause flooding of homes or heat-related illness. In contrast to heat waves, warmer summers are an example of a climate-related disruption that unfolds gradually but contributes to adverse effects. Climate resilience plans organize strategies to prepare for and adapt to climate-related harms.

Examples of Hazards



Air Quality



Extreme Heat



Flooding



Freeze / Thaw Cycles



Storms

Franklin Park's Climate Resiliency Planning Process

The Village of Franklin Park is working with Cook County to develop a climate resiliency plan that follows a community-driven planning and prioritization process to understand climate hazards, set goals and identify projects that bolster resiliency. Completing and implementing the plan will improve Franklin Park's resiliency to the effects of climate change, including severe weather events such as heavy rain, flooding and extreme heat.



Through the partnership, Franklin Park will also receive funding to support actions such as managing stormwater through green infrastructure, planting and maintaining trees, promoting residents' health and well-being and bolstering community assets to lessen negative impacts from a changing climate.

The Village will be considering the following issues and opportunities, along with other community priorities that emerge through the planning process, as part of the resiliency plan:

- Flooding and stormwater management issues
- Expanding the tree canopy throughout the Village
- The use of green infrastructure to retrofit parking lots and help reduce stormwater runoff

For more information about Franklin Park's Climate Resiliency Plan, please visit:

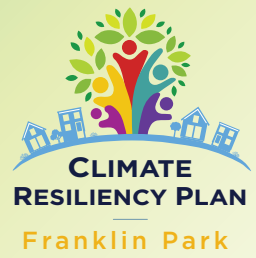
<https://www.cookcountyil.gov/service/franklin-park-climate-resiliency-plan>



COOK COUNTY
DEPARTMENT OF
Environment &
Sustainability

Cook County's Department of Environment and Sustainability (DES) is using American Rescue Plan Act (ARPA) funds to support five municipalities in developing Climate Resiliency Plans and conduct initial implementation. To learn more about the County's partnership with these communities to develop and implement climate resiliency plans that prepare them to thrive in a changing climate, visit the Cook County Climate Resiliency website at: <https://www.cookcountyil.gov/climate-resiliency>.

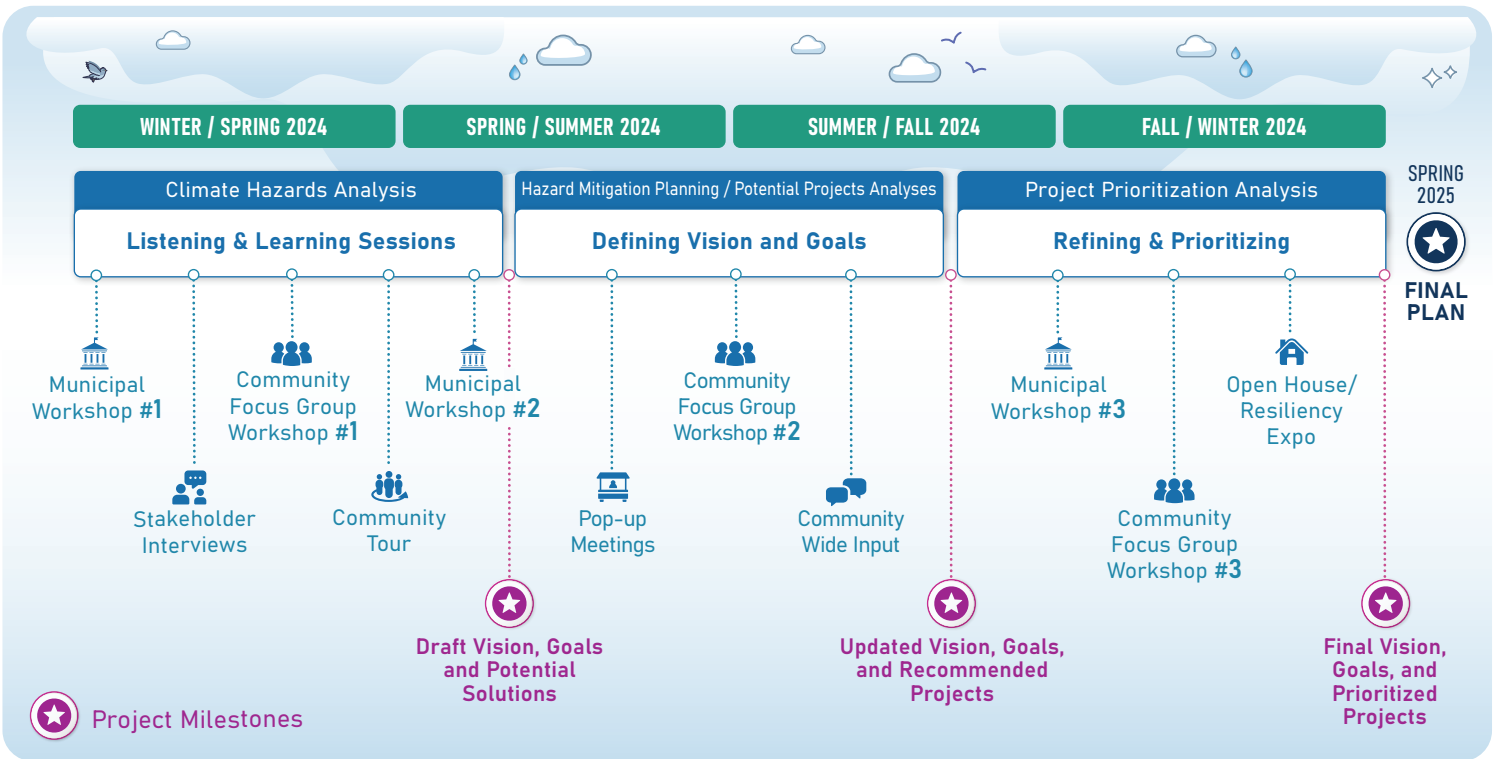
Village of Franklin Park Climate Resiliency Plan



Community Engagement

As a community-driven effort, the climate resiliency plan will establish Franklin Park's priorities and needs through public input and participation. Public events and other opportunities to voice your concerns and priorities will be publicized through the Village's and Cook County's website, newsletters and social media.

Planning Schedule



Contact Us

Metro Strategies Group
Elli Cosky
ecosky@metrostratgroup.com

Cook County Department of Environment and Sustainability
Brian Daly
environment@cookcountyil.gov

Village of Franklin Park
Nicholas Walny
nwalny@vofp.com



Click or scan this QR code to sign up for project updates and learn about opportunities to help shape Franklin Park's climate resiliency plan.

